

Diesel Injector Puller Set

This 3 piece Diesel Injector Puller Set comes complete with an extractor key for removing the inner part of the Bosch injectors. Fits Sprinter, ML270, C-Class, E-Class and Grand Cherokee 2.7 CRD (2000>) (612.963 engine code)..



Additional Information

- Complete with an extractor key for removing the inner part of the Bosch injectors.
- Perform the task without resorting to using a slide hammer.
- Also suitable for removing the injectors without removing the cylinder head on Mercedes-Benz Sprinter, E-Class, C-Class.
- Manufactured from Chrome Vanadium.
- Supplied in blow mould case for storage.

<http://lasertools.co.uk/product/4762>

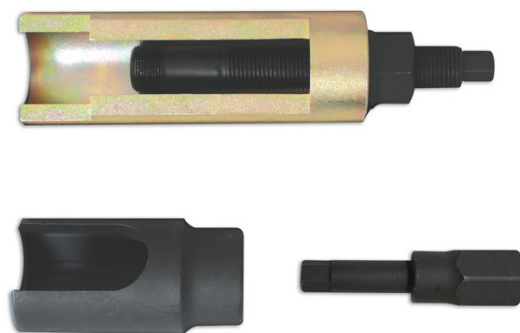


Image A

This tool cannot be used on engines with this cam cover design (2.7 CDI/CRD)

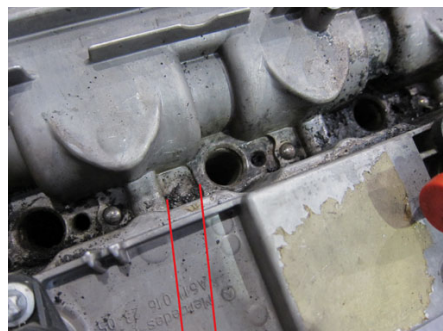


Image B

Suitable for use on engines CDI (C-Class, E-Class and Sprinter)

